

First isolation and molecular characterisation of a cryptic plasmid from urease-negative *Campylobacter lari*

H. BATORI, T. SEKIZUKA, O. MURAYAMA, J. E. MOORE, B. C. MILLAR and M. MATSUDA

Laboratory of Molecular Biology, School of Environmental Health Sciences, Azabu University, Fuchinobe 1-17-71, Sagami-hara 229-8501, Japan; and Department of Bacteriology, Northern Ireland Public Health Laboratory, Belfast City Hospital, Belfast BT9 7AD, UK

Figure 2 contained significant errors when this Biomedical Science in Brief item was published originally (*Br J Biomed Sci* 2005; 62 137–140). Figure 2 from this paper is reproduced here in its correct form.

Correspondence to: Dr. Motoo Matsuda
 Laboratory of Molecular Biology, School of Environmental Health Sciences, Azabu University, Fuchinobe 1-17-71, Sagami-hara 229-8501, Japan
 Email: matsuda@azabu-u.ac.jp

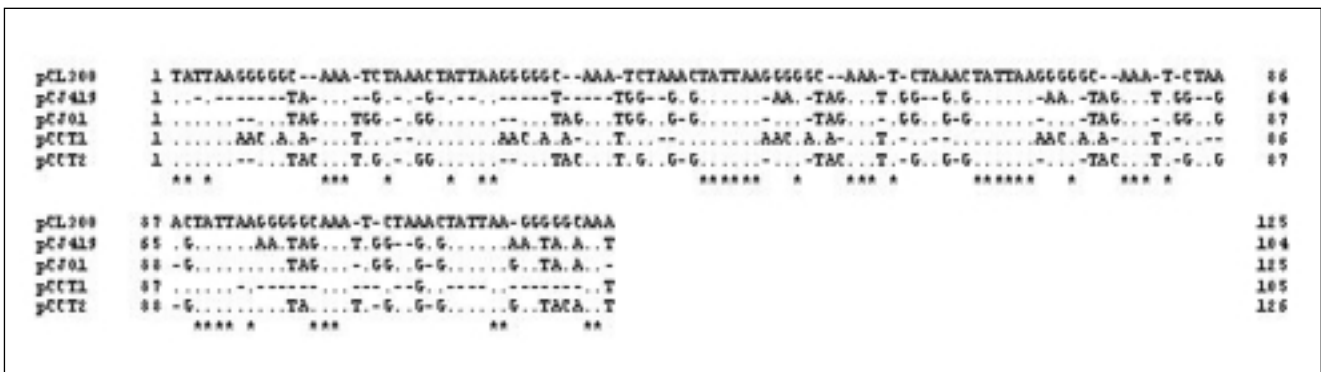


Fig. 2. The iteron sequence of pCL300 showed significant sequence similarity to other iteron sequences reported previously for thermophilic campylobacters.